

Buildings:
18707
18715
18723
18739



Copyright 2013 © CATALYST TECHNICAL GROUP, INC. (CTG) this drawing and the work depicted herein are the sole property of CATALYST TECHNICAL GROUP, INC. No portion of this drawing may be copied without the express written consent of CTG, INC.

No.	DATE	REVISIONS

PROJECT TITLE

**PROPOSED DEVELOPMENT
FOR RETAIL/OFFICE BUILDING
LOCATED AT
18735 MUESCHKE RD
HOUSTON TX, 77070**

SEAL

THIS DOCUMENT IS RELEASED FOR THE PURPOSE OF INTERIM REVIEW ONLY BY MADHAVI TALLURI, P.E. LICENCE # 113329 (NOT FOR REGULATORY APPROVAL, BIDDING, CONSTRUCTION)

DATE: 10/4/2022

GENERAL NOTES:

CTG Project Number: 21-006

Drawn By: S.K

Checked By: T.M

Scale: 3/16"=1'-0"

File Path:
c:\dwg\2022\04\2022 download\staha guduru\18735 mueschke rd - lomball - 2.04 ac\ctg\arch\g-1.0 floor plan

SHEET TITLE:
CONCEPTUAL FLOOR PLAN

SHEET NUMBER:

A-1.0

Building:
18731

No.	DATE	REVISIONS

PROJECT TITLE

**PROPOSED DEVELOPMENT
FOR RETAIL/OFFICE BUILDING
LOCATED AT
18735 MUESCHKE RD
HOUSTON TX, 77070**

SEAL

THIS DOCUMENT IS
RELEASED FOR THE
PURPOSE OF INTERIM
REVIEW ONLY
BY MADHAVI TALLURI, P.E.
LICENCE # 113329
**(NOT FOR REGULATORY
APPROVAL, BIDDING,
CONSTRUCTION)**

DATE: 12/12/2022

GENERAL NOTES:

CTG Project Number: 21-006

Drawn By: S.K

Checked By: T.M

Scale: 3/16"=1'-0"

File Path:

\\c:\p\2022\06\2022\download\staha\guduru\18735 mueschke rd - lomball - 2.04 ac\ctg\arch\18735-1.0 floor plan

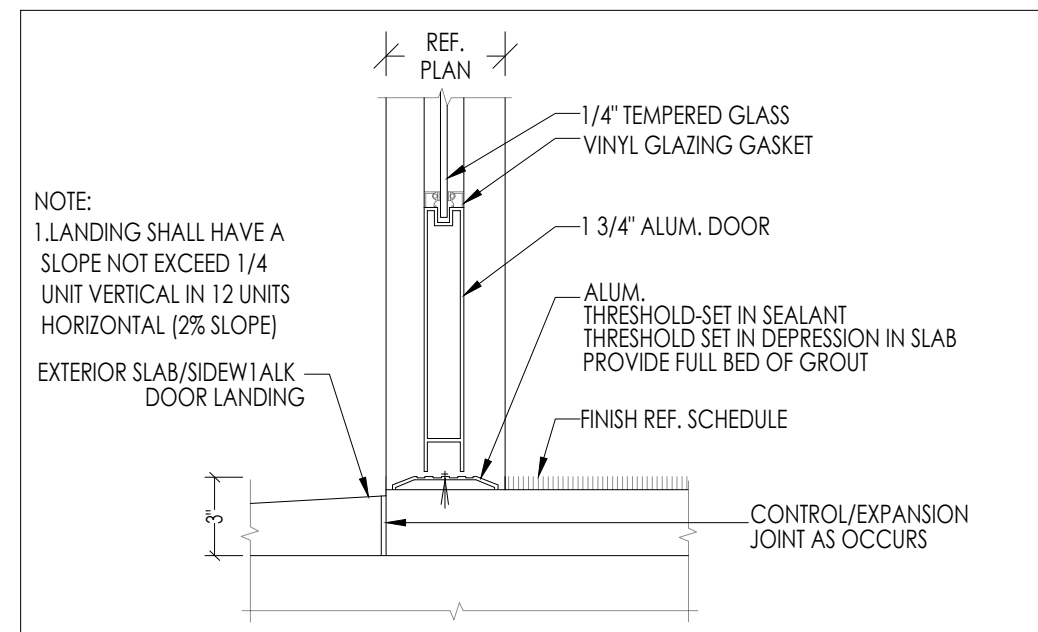
SHEET TITLE:

**CONCEPTUAL
FLOOR PLAN FOR
BUILDING-6**

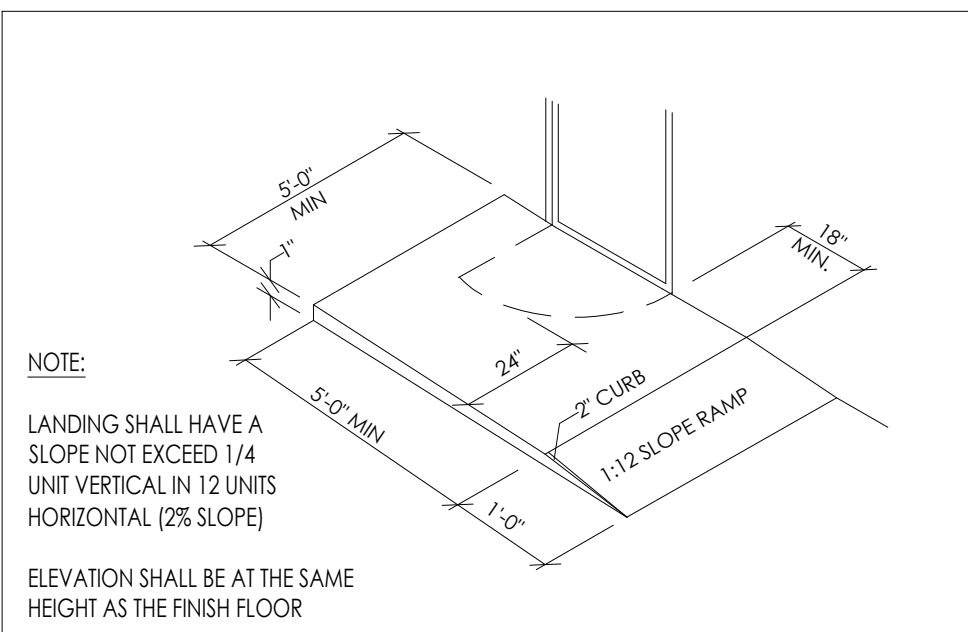
SHEET NUMBER:

A-1.0

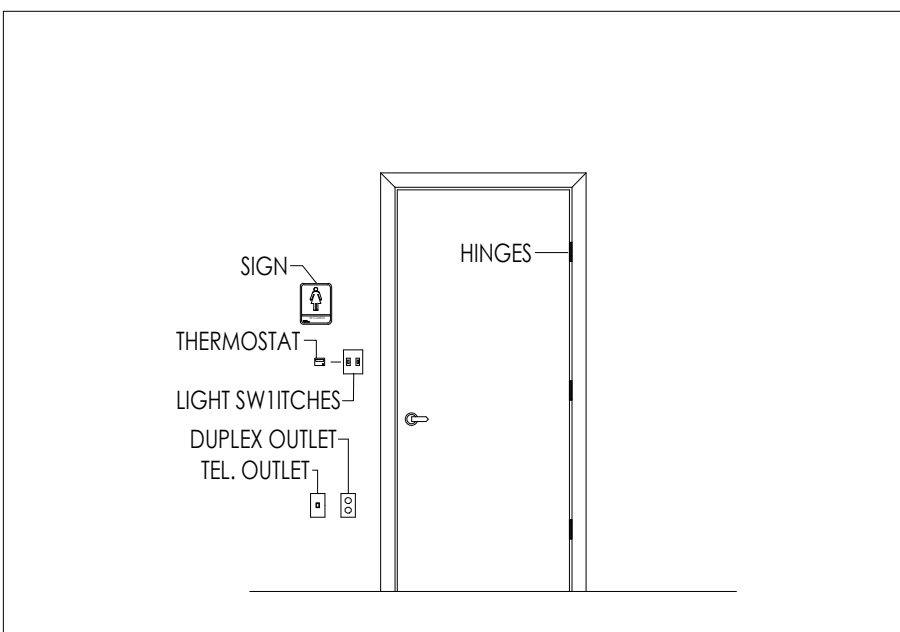




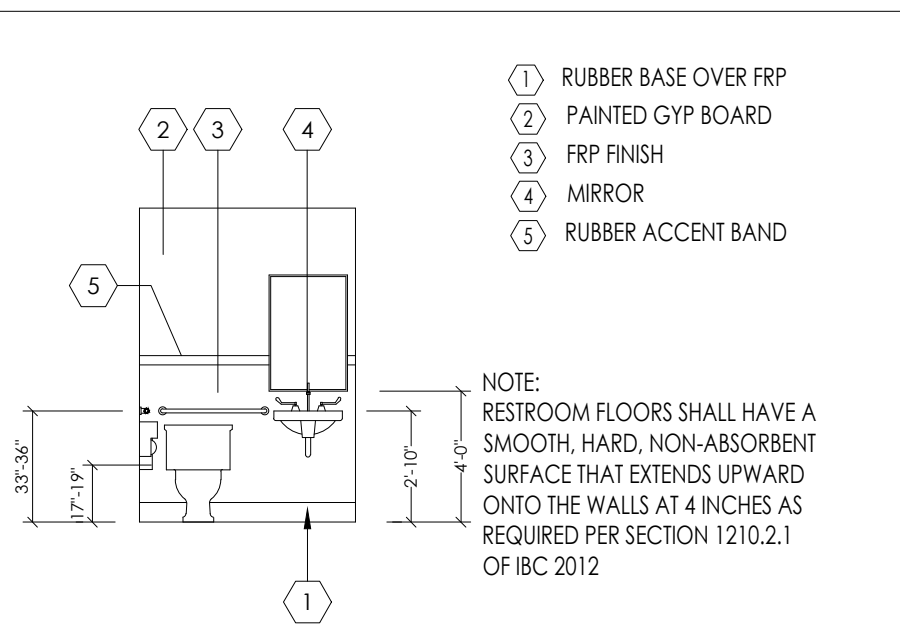
1 DOOR THRESHOLD DETAIL SCALE: N.T.S.



2 LANDING DETAIL SCALE: N.T.S.



3 TYPICAL MOUNTING LOCATION SCALE: N.T.S.



2 RESTROOM ELEVATION SCALE: N.T.S.

LEGEND

- PROPOSED 5/8" THICK BRICKLEDGE
- PROPOSED WOOD STUD WALL
- EXIT SIGN / EMERGENCY LIGHT COMBO . 120V/277V AC, 6V DC WITH 90 MINUTE BATTERY BACKUP, SURE-LITES
- EMERGENCY EGRESS LIGHT FIXTURE WITH BATTERY BACK-UP SURELITE#UMB-1 INCANDESCENT LIGHT FIXTURE, 120/277V BALLAST, UNIVERSAL MOUNT, APPROVED FOR WIEI LOCATIONS, 2-8W/1 INCANDESCENT SEALED BEAM LAMPS AND 90 MINUTE LEAD CALCIUM BATTERY BACKUP.
- PORTABLE FIRE EXTINGUISHER TYPE 1 CLASS 2A DISTANCE OF 75 FEET
- WALL TYPES REF: SHEET NO-6.0

CATALYST TECHNICAL GROUP, INC.

440 Cobia Drive
Suite #1503
Katy, TX 77494
Ph: 832-913-1888
info@texasctgroup.com
www.texasctgroup.com
T.B.P.E FIRM # 15775

Copyright 2013 © CATALYST TECHNICAL GROUP, INC. (CTG) this drawing and the work depicted herein are the sole property of CATALYST TECHNICAL GROUP, INC. No portion of this drawing may be copied without the express written consent of CTG, INC.

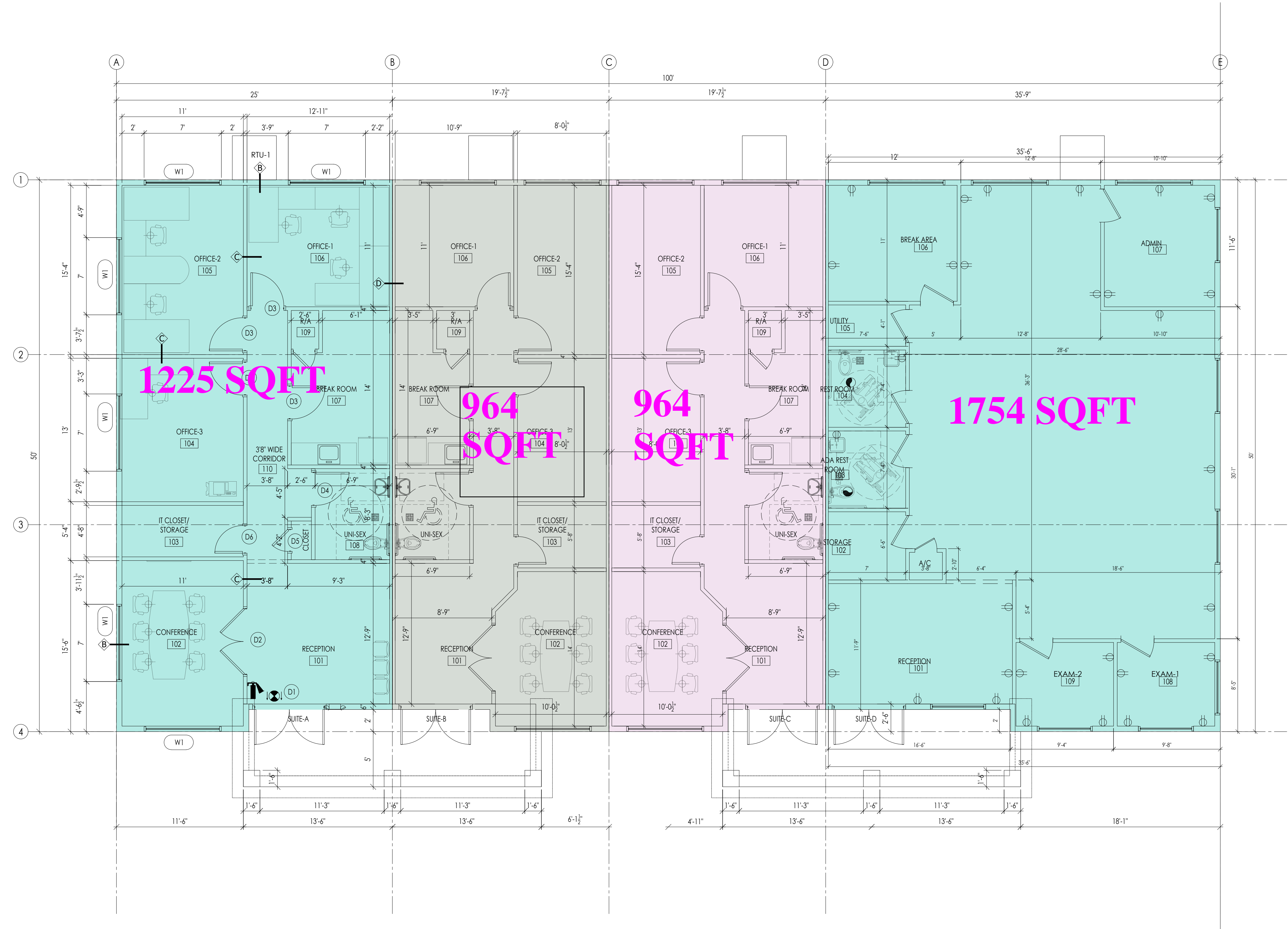
No.	DATE	REVISIONS

PROJECT TITLE

**CYPRESS NEXT
OFFICE BUILDING
LOCATED AT
18747 MUESCHKE RD
CYPRESS, TX 77433**

- KEY NOTES**
- PROJECTOR PAINT ON WALL.
 - KEYED ENTRY
 - COUNTER TOP FOR COMPUTER
 - COUNTERTOP W/CABINETS 34" ABOVE F.F.L.
 - FLOOR DRAIN
 - SINK
 - COPY/FAX
 - REFRIGERATOR
 - AC CONTROL KEY PADS
 - STEEL COLUMNS REF:STRUCTURES
 - MICROWAVE
 - CABINETS ABOVE
 - WATER DISPENSER

Building:
18747



SEAL

DATE: 8/10/2023

GENERAL NOTES:

CTG Project Number: 23-002-2

Drawn By: S.K

Checked By: T.M

Scale: 3/16"=1'-0"

File Path:

SHEET TITLE:

FLOOR PLAN

SHEET NUMBER:

A-1.0